

# Conference Pack 2023

*From the corners of Aotearoa, we come together*

**Marlborough Events Centre, Blenheim**

**17-19 March 2023**



*ngā hau e whā*

*'the four winds'*

# THE 63RD MTNZ CONFERENCE, AGM AND TRAINING WEEKEND BLenheim 2023

Welcome to the Musical Theatre New Zealand information pack for the *ngā hau e whā* Conference, AGM, and Training Weekend 2023. The theme comes as our membership gather where MTNZ was founded all those years ago, in Blenheim, by a collective of committed individuals who saw the benefit in our community working together and pooling our resources.

Thank you to all the fantastic sponsors, workshop hosts, speakers and facilitators who are contributing to this prestigious event; your contribution to the resilience and development of theatre in New Zealand is exceptional and deeply appreciated.

A further thanks to Blenheim Musical Theatre for hosting MTNZ Conference.

The MTNZ Executive invites you to be a part of Conference 2023. You will participate in training, education seminars, forums and workshops facilitated by some of New Zealand's leading performing arts professionals. The national iTICKET theatre awards are held on Friday night, and on Saturday night the annual themed John Herber Celebratory Gala Ball. The MTNZ AGM is also held over this weekend.

Please find below information to help inform your weekend, so you are able to take full advantage of this amazing weekend. We know you will have a great time, and we are looking forward to bringing everyone together.

To our volunteers, our boards, our crews, our performers, our technical teams, our creative teams, and theatre enthusiasts nationwide; *ngā hau e whā* – from across Aotearoa, let's come together.

*Musical Theatre New Zealand*

*Connecting Communities Creatively*



*From the corners of Aotearoa, we come together*

HELEN HORSNELL  
PRESIDENT  
MUSICAL THEATRE NEW ZEALAND

John Herber - Major Sponsor of MTNZ  
and Diamond Event Sponsor



Platinum Event Sponsor

***iTICKET***

Conference Event Sponsors



**WAIRAU RIVER**

MARLBOROUGH NEW ZEALAND



## Conference Technical Sponsors



## Conference Workshop & Award Sponsors



MUSIC THEATRE  
INTERNATIONAL  
Australasia





# iTICKET

## WE'RE BACK IN 2023!



### Aoteoroa's only triple threat ticketing agent

- 100% Locally owned and operated
- World-class technology to help your theatre / production
- A friendly and experienced team to support your event

### Proud Platinum Partners of Musical Theatre NZ

**WIN a MTNZ 2023 conference pass for future talent.**

Nominate a talented, future generation theatre performer / practitioner to learn, network and attend the MTNZ conference. Nominations can be sent to [marketing@iticket.co.nz](mailto:marketing@iticket.co.nz).



Get in touch about your next event today: [hello@ iticket.co.nz](mailto:hello@iticket.co.nz)

**TICKETING. EVENTS. PEOPLE. LOVE**

**iTICKET**

# WEEKEND ITINERARY

Connecting Communities Creatively  
Te huihuinga mai i ngā hapori wairua auaha

## Friday 17 March

8am	Pack in opens for MDR Theatre Expo
11am – 10pm	The ORiGiN Theatrical Info Hub open hours
1pm	MDR Theatre EXPO opens
3pm – 4pm	MTNZ Training Session One
4pm-5pm	MTNZ Training Session Two
6.45pm	The iTICKET National Awards Dinner (Foyer bar open for informal pre-dinner drinks. Event themed 'Under the Sea'.)



## Saturday 18 March - morning

8.30am - 9.15am	The MTNZ Korero Cafe - Life members
9.15am - 10.00am	Zone Time - hosted by Zone Reps
10.00am - 10.30am	The AGM Morning Tea
10.30am - 12.00pm	The MTNZ 63rd Annual General Meeting
12.00pm - 12.45pm	The G&T Productions AGM Lunch



Please be advised - training sessions take place at the Marlborough Convention Centre, The ASB Theatre, The Scenic Hotel Chart Room and The 'School Across the Road'.

Please see the helpful team at the Information Hub if you require any help locating your selected training workshop. All locations are within short walking distance.



From the corners of Aotearoa, we come together

# WEEKEND ITINERARY

Connecting Communities Creatively  
Te huihuinga mai i ngā hapori wairua auaha

## Saturday 18 March - afternoon

1pm - 2pm	MTNZ Training Session Three
2.15pm – 3.15pm	MTNZ Training Session Four
3.30pm – 4.30pm	MTNZ Training Session Five
4.30pm	MDR Theatre EXPO pack out
6pm-7pm	The ORiGiN Theatrical Drinks Hour - <i>light canapes supplied</i>
7pm - Late	The John Herber Ltd. "A Queen for a Night" Gala Ball (Event Priscilla themed)



**Note:** Full event pack out required by closing on Saturday 18 March

## Sunday 19 March

9am	ASB Theatre Marlborough Tour A
10am	ASB Theatre Marlborough Tour B

(Meet at the Marlborough ASB Theatre front entrance, spaces are limited and require advance booking via the Conference Registration Form)



From the corners of Aotearoa, we come together

---

Please be advised - training sessions take place at the Marlborough Convention Centre, The ASB Theatre, The Scenic Hotel Chart Room and The 'School Across the Road'.

Please see the helpful team at the Information Hub if you require any help locating your selected training workshop. All locations are within short walking distance.



# EVENING FUNCTIONS

## UNDER THE SEA

Marlborough is well-known for many aspects, namely wine, seafood, and the beautiful Marlborough Sounds. We will be incorporating these into our evening themes.

According to Māori mythology the Marlborough Sounds are the prows of the sunken wakas of Aoraki and is an important, iconic geological feature of our beautiful region. Marlborough offers an abundance of seafood - with Havelock being recognised as the capital of the green shell mussel.

Friday nights dinner is honouring both with the theme of Under the Sea.



## QUEEN FOR THE NIGHT !

This is your chance to go big, go bold and get creative! Whether you want to follow in the footsteps of our Priscilla Queen of the Desert performers or take inspiration from Royalty past or present, this is your chance to shine... literally! Think jewels, extravagant makeup, wigs and high heels. There will be plenty of delicious vino from our sponsors Wairau River Wines, along with some tasty local food.

Bring your dancing shoes too as there will be great entertainment from the Haymas Knowlor Duo - these guys have performed nationally and internationally in musical theatre as well as a band.

**I LOVE THE NIGHT LIFE,**  
*I've got to boogie!*



## TOUR

The ASB Theatre Marlborough, which opened in March 2016, is a multi-use and purpose built venue, situated overlooking Blenheim's Taylor River. This beautiful facility is conveniently located adjacent to the Marlborough Convention Centre in Blenheim's CBD. A world class venue, ASB offer state-of-the-art facilities and amenities for live performance and theatrical events, conferences, functions and exhibitions offering four very different spaces within the facility, providing options for all manner of events.

Take this opportunity for a free tour behind the scenes of this amazing venue at 9am or 10am on Sunday 19th March. Places are very limited so must be booked in advance and strictly on a first-come, first-served basis. Please see registration form for further details on booking.





# Study Theatre

## For a creative career

Act, sing, and dance with a Bachelor of Music and Performing Arts.

[wintec.ac.nz/creative](http://wintec.ac.nz/creative)







**Waterfall Curtain**



**String Curtains**



**Issac Theatre Royal**

# JOHN HERBER LTD

Our talented team can  
manufacture to your exact  
specification  
or help you design and  
create an amazing drape



**Fire Retardant Services**



**Book Flats**



**Sound Shell**



**Push Ups**

**TrumpF95 Track**



**JH**  
**JOHN HERBER**  
LIMITED

**JH**  
**JOHN HERBER**  
**NZ FIRE SHIELD**  
LIMITED

Major Sponsors of MTNZ

64 Williams Street Kaiapoi 7630 New Zealand

Website: [www.johnherber.co.nz](http://www.johnherber.co.nz)

Email: [info@johnherber.co.nz](mailto:info@johnherber.co.nz)

Ph: +64 3 327 0975



# WORKSHOP OVERVIEW

## FRIDAY WORKSHOPS

### Friday Afternoon: 3pm - Session 1

#### **Session 1F: Into the Words (*Sessions 1 & 2 combined*)**

**Facilitator:** Jane Keller Sponsored by Fabulosity Productions

What is this song about? Read the text. Where do I breathe? Read the text. What am I feeling? Read at the text.

In this workshop singers will present a musical theatre song. They will spend some time speaking the text as a monologue as a way into the song. We are looking for a truthful, authentic performance. How do we achieve this with our acting? It's all there in the text.

#### **Session 2F: Stage Managers Giving Meaningful Notes (*Sessions 1 & 2 combined*)**

**Facilitator:** Kathryn Osborne

A practical, interactive session for Stage Managers to practice and be reviewed giving performers notes. This involves a refresher in what good note giving is followed by role playing scenarios with two actors in various situations where notes are required.

#### **Session 3F: Wigs - Work With Wigs - how to care for, block and dress wigs (*Sessions 1 & 2 combined*)**

**Presenter:** Sarah Buchanan

Demonstration (some hands on) on learning the process of wig blocking and care as well as period styling, building wigs when specific extreme styling is required. How to put on a wig (including hair prep), how to change a wig and also fast change wigs and the techniques behind this. What and where to order for your show, and the difference between working with synthetic and human hair wigs.

#### **Session 4F: Props - Props Problem Solving (*Sessions 1 & 2 combined*)**

**Presenter:** Fifi Colston

'How do I make a....?'

It's the production conundrum. You need twenty swords, fake fruit or a way to transform a cake on stage into a carnivorous plant without an explosion of icing every night.

Bring your questions to a brainstorming session on crafty ways to achieve clever props on a limited budget. Send any in advance so Fifi can do a bit of forward thinking and answer your questions first up.

This will be a fun group session that will have you go away brimming with ideas.

## **Session 5F: Dance Masterclass - Commercial Jazz (*Sessions 1 & 2 combined*)**

**Presenter:** Darcy Goodall

The commercial Jazz genre is becoming very prominent in the Musical Theatre industry overseas; attend this masterclass to strengthen your skills in this field.

## **Session 6F: Conflict Resolution (*Session 1 only, please also select from Session 2 workshops*)**

**Facilitator:** David Adkins - Sponsored by AON Insurance

Too often we hear horror stories about conflict occurring within theatre groups. Often this is between the creatives as visions clash and tempers fly, or committee members as personal agendas get in the way of good governance. Cast and crew are not immune either and what started out as a tight knit team can quickly unravel into a nightmare!

This conflict resolution discussion has a heavy focus on prevention and focuses on understanding the core reasons that conflict appears, what causes it, who is responsible for fixing it, and above all, how do we prevent it from happening. It discusses the responsibilities of creatives and committees, and touches lightly on dealing with bullying and harassment.

## **Session 7F: The New Incorporated Societies Act: *what it means for our Societies & constitutions***

**Facilitator:** Jeremy Sparrow

With the new incorporated societies legislation amendments passed in parliament it is not too long until changes will be finalised. What are the changes? What do they mean and why are they necessary? How can MTNZ support you as we are all required to review our constitutions?

## **Friday Afternoon : 4pm - 5pm - Session 2**

### **Session 8F: Funding**

**Facilitator:** Renee Casserly and Panel, Creative NZ

Deepen your understanding of Creative New Zealand funding. In this session you will have an opportunity to ask questions directly to CNZ on positioning yourself to be eligible for funding.

### **Session 9F: Demystifying Accessible Performances**

**Facilitator:** Steve Lloyd NPOS and Stace Robertson - Arts Access Aotearoa  
(sponsored by New Plymouth Operatic Society)

Making your show accessible to the hearing impaired and blind communities.

- The accessibility process
- Walk through how to engage with the professionals you need to bring your accessible performance alive.
- Leveraging existing collateral
- Planning your accessible performance
- Things New Plymouth Operatic Society learnt implementing accessible sessions

# SATURDAY WORKSHOPS

**Saturday Morning: 8.30am - 9.15am**

## **Session 10S: Kōrero Café**

**Facilitators: Kate Ghent and MTNZ Life Members**

This fun and engaging space facilitates networking and collaboration as we mull over some of the tricky topics facing theatres today speed dating style!

**Saturday Morning: 9.15am - 10.00am**

## **Session 11S: Zone Time / NextGen Meeting**

**Facilitators: Zone Reps and NextGen Rep**

Ever been to an MTNZ conference but never found enough time to catch up with your Zone Rep?? Would you love the opportunity to network with others involved in theatre near you? For the first time, we are dedicating time for each Zone to network with each other and meet their Zone Reps. We all know how hard it has been to host zone meetings in the past 2 years so we have made this a priority for our members. Come and chat, hear what has been happening in your zone and share how our zone reps can continue to help you!! This is also the opportunity for the NextGenners to meet and network. See you there!

**Saturday Afternoon: 1.00pm - 2.00pm - Session 3**

## **Session 12S: Technical Talk Forum**

**Facilitator: Stephen Compton & others**

A fantastic opportunity for a technical, informal, “chewing the fat” session with these industry professionals. You can discuss with the panel any specific technical issues you might be having or just a general Q&A session.

## **Session 13S: Social Media Marketing Strategies to Make Your Message Sing**

**Facilitator: Rachel Klaver**

Like all performances, the best outcomes come from a mix of planning, scripting, practice and confidence when it all goes live. Learn how to make the most of the resources at your fingertips, what helps increase your views and engagement, and what tools you can use to make your social media marketing stand out. We'll cover content plans, designing posts, short-form video, and more. This fast-paced, valued-packed workshop run by marketing strategist Rachel Klaver will help you build out a plan to get your social media under control, without boring you and your readers to death. (no one likes a snoring viewer!)

## Saturday Afternoon 1.00pm - 2.00pm - Session 3 Continued

### **Session 14S: Choreography - level up (*this session spans session 3 and 4*)**

**Facilitator:** Darcy Goodall

Fill your tool belt with techniques to make your choreography pop. In this movement-based workshop, you'll learn a basic choreography and then Darcy will take you through different techniques to add layers and create contrast. Choreography isn't just about dance technique; the use of dynamics can help tell story, emphasis emotion and make simple movements look showstopping. Accessible for all levels of ability.

### **Session 15S: Becoming a Versatile Musical Theatre Singer (*this session spans session 3 and 4*)**

**Facilitator:** Jane Keller

As we all know, musical theatre has many different singing styles. Legit ( Lyric ), Belt , Contemporary Music Theatre and Pop/ Rock are the main four. When we throw in Twang, Speech Quality and Mix, things can get very confusing.

In this workshop, we will look at all of these singing styles but will concentrate mainly on Twang and Speech Quality. This will be an interactive workshop with everyone participating .

We will close with a group discussion on vocal health, stamina, sharing vocal warm-ups and audition advice.

### **Session 16S: Costuming Workshop (*This workshop spans session 3 and 4*)**

**Facilitator:** Fifi Colston

In this fun, hands on intensive, you will create your own concepts using scale models, learn essential construction techniques for keeping your garment together and experiment with recyclable materials to create theatre worthy costumes and accessories.

### **Session 17S: Adding Interns, Mentorship**

**Facilitator:** Emma Bishop

Internships provide a form of experiential learning that integrates knowledge and theory with practical application in an actual real setting. Interns programmes give the opportunity to not only gain valuable applied experience but also make connections within the theatrical field as well as providing an opportunity to guide and evaluate talent and future artistcs. Interns programmes are a great way for groups to build capacity to ensure the development of future team members. Emma created and implemented a highly successful model for Auckland Music Theatre in 2014 called "Interns Wanted". This programme ran for three years and then was further developed and run by the AMT Next Gen Committee. Find out how you can help develop your society.

## Saturday Afternoon 2.15-3.15pm - Session 4

### Session 18S: Demystifying Accessible Performances

**Facilitator:** Steve Lloyd NPOS and Stace Robertson - Arts Access Aotearoa  
(Sponsored by New Plymouth Operatic Society)

- Making your show accessible to the hearing impaired and blind communities.
- The accessibility process
- Walk through how to engage with the professionals you need to bring your accessible performance alive.
- Leveraging existing collateral
- Planning your accessible performance
- Things New Plymouth Operatic Society learnt implementing accessible sessions

### Session 19S: Marketing to Attract Sponsorship

**Facilitator:** Rachel Klaver

Make your productions well funded, and create community support with effective sponsorship. Join this workshop with marketer Rachel Klaver, to work out what you need to consider when asking for sponsorship, how to create long-term strategic alliances, and why it's not really ever about you at all.

### Session 20S: The new Incorporated Societies Act: What it means for our Societies & Constitutions

**Facilitator:** Jeremy Sparrow

With the new incorporated societies legislation amendments having been adopted there are implications for all incorporated societies. What are the changes? What do they mean and why are they necessary? How can MTNZ work alongside you as you update your constitutions and process to comply?

### Session 21S: It's a Digital Console, Don't You Just Press GO?

**Facilitator:** Stephen Compton

The session would be on practical sound mixing for musical theatre audio engineers. (Managing multiple radio microphones, scenes, sound-checks, setting levels, dynamics and more) Including demonstrations of how to set up a script, the mixing desk, scenes etc to manage the demands of theatre audio.

## Saturday Afternoon 3.30pm - 4.30pm - Session 5

### Session 22S: Copyright Holders Forum

**Facilitators:** Copyright Holders - MTI, ORiGiN Theatrical, Playmarket, PlayBureau, OneMusic

An opportunity to hear what is new and happening from our copyright holders. This forum is also a great opportunity to pose your questions or concerns to the copyright holders directly.

## Session 23S: Conflict Resolution

**Facilitator:** David Adkins

Too often we hear horror stories about conflict occurring within theatre groups. Often this is between the creatives as visions clash and tempers fly, or committee members as personal agendas get in the way of good governance. Cast and crew are not immune either and what started out as a tight knit team can quickly unravel into a nightmare!

This conflict resolution discussion has a heavy focus on prevention and focuses on understanding the core reasons that conflict appears, what causes it, who is responsible for fixing it, and above all, how do we prevent it from happening. It discusses the responsibilities of creatives and committees, and touches lightly on dealing with bullying and harassment.

## Session 24S: Performing in the Intimate Zone. *An Introduction to Best Practice for Intimate Scenes*

**Facilitator:** Carrie Thiel

Scenes that involve intimacy can be challenging for both directors and actors. Given that this is a sensitive area of performance, the vulnerability of the actor must be acknowledged and addressed using best practice. Consent, communication and transparency are the central tenets for this work.

## Session 25S: Pepeha in your pocket

**Facilitator:** Sonya Aifai

Pepeha is a way of introducing yourself in Māori. It tells a story of the places and people that are important to you. It allows the listener to know more about you and make connections. In this workshop we will explore pepeha and how it relates to you. You will walk away with a pepeha in your pocket that you can use at many functions and events that are relevant to you.

# Workshop Visual Overview

<b>Friday</b>							
3.00-4.00pm	1F	2F	3F	4F	5F	6F	7F
4.00-5.00pm						8F	9F
<b>Saturday</b>							
8.30-9.15am	10S						
9.15-10.00am	11S						
10.00-10.30am	Morning Tea						
10.30am-12pm	AGM						
12pm-12.45pm	Lunch						
1.00-2.00pm	12S	13S	14S	15S	16S		17S
2.15-3.15pm	18S	19S				20S	21S
3.30-4.30pm	22S	23S		24S		25S	



# MUSICAL THEATRE NZ EXPO

**MARCH 17-18 2023**  
**BLLENHEIM**

Musical Theatre New Zealand would love to notify potential EXPO stand holders of their upcoming Musical Theatre based EXPO – held during their 2023 Conference Weekend, March 17-18 in Blenheim.

## MTNZ EXPO

Our EXPO has been steadily growing and diversifying from initial stall holders who were primarily technical and trade stands; MTNZ continues to foster an engaging EXPO with relevant product, demonstrations and interactive displays which is frequented by conference attendees.



## Why our EXPO:

MTNZ have numerous theatrical society members and performance educators, many of whom are represented at conference.

Around 250 individuals attend from across New Zealand, with national promotion.

Conference is attended by committees, performers, wardrobe, front of house, props, technical teams, hair and make up, producers, choreographers, directors, musicians and more.

Participate in a key Musical Theatre weekend for those participating in community theatre.

Member discounted price ONLY \$70 unless you are a corporate member of MTNZ; Non-membership \$150 including complimentary annual MTNZ membership

Email [office@mtnz.co.nz](mailto:office@mtnz.co.nz) to find out more.

2



3

## The MTNZ EXPO incorporates four key areas:

**PERFORMANCE Educators;** those who are busy upskilling, training and developing those involved in any aspect of theatre and performance throughout Aotearoa.

**THEATRE Service;** those who provide any type of service to community theatre; rights holders, phone/power/insurance suppliers, health and safety supply, business/volunteer support, beverage/catering supply, design etc..

**PERFORMANCE Health;** supplements, physical therapy, vocal support/technique etc..

**TECH Support/Supplies;** sound and lighting, photography, AV supply, theatre fit-out etc..

4



# WEEKEND ENTERTAINMENT

## Introducing our MC for the Weekend Ken Hippolite

Ken has been involved in musical theatre for over 30 years, including Ashburton, Invercargill and Blenheim. In such roles as Caiaphas (JC Superstar), Molokov (Chess) and Audrey II, Ken has demonstrated wide range and versatility.

Ken's experience as a Radio Announcer means he is often called upon to be the front-man – but sometimes he just wont shut up!



## Introducing our Friday Night Keynote Speaker Tom Knowles

Iwi: Rongowhakaata

Tom is a graduate of Toi Whakaari: The New Zealand Drama school.

He has toured New Zealand extensively with *Grease*; *Saturday Night Fever*; *Hinepau*; *Seed*; Live Live Cinema's *Little Shop of Horrors* and *Cringeworthy*!.



Tom also performed in The National Theatre of London musical production of *The Brief and Frightening Reign of Phil*, in collaboration with Bret McKenzie; and the Harcourt-McKenzie's latest verbatim show, *Transmission*.

He has written a multi award-winning rock opera, *Allergic to Love: Curse of the 80's*, which toured to America, Mexico and throughout New Zealand.

Last year saw the development of his new, children's reggae-roots musical, *Atarangi: Morning Sky*, which was a finalist for the PAYPA 'Most original production' award, and a recent finalist for the 'Playmarket Plays for our Young' award.

The musical recently received funding from NZ on Air to be released as an album later this year.

TV credits include *The Brokenwood Mysteries*; *The Māori Sidesteps*; and the Export low carb beer advert which featured the award-winning song, *I'm drinking it for you*. Tom has performed with the Modern Māori Quartet, The Tiwhas and regularly plays in multiple bands around New Zealand.

Most recently Tom appeared on stage in The Court Theatre's production of *ONCE the musical* and in the New Zealand tour of *Shrek The Musical* in the title role.

# REGISTRATION PRICING

## **Full Conference Weekend Registration \*Early Bird Special\* \$310**

or \$360 after 31 January 2023

Attend all elements of this fantastic weekend including; dinners, training, networking and AGM.

## **MTNZ Conference Training Sessions only - \$150**

Attend any of the training and networking sessions throughout the weekend.

## **Annual General Meeting Only - \$60**

Attend the MTNZ AGM, with morning tea and G&T Productions sponsored AGM lunch provided

*(Please note if you are registering for the full conference, this function is INCLUDED in the full registration fee.)*

## **The iTICKET Friday Night Awards Dinner and Function Only -\$85**

Themed Underwater World and featuring a two course plated meal - alternate drop. Guest speaker Tom Knowles, live entertainment, and presentation of the MTNZ national awards

*(please note if you are registering for the full conference, this function is INCLUDED in the full registration fee.)*

## **The Saturday Night John Herber A Queen for the Night Dinner and Gala Ball - \$150**

Themed after Priscilla the Musical - A Queen for the Night Fancy Dress Gala Ball features a buffet dinner, a live b and great company.

*(please note if you are registering for the full conference, this function is INCLUDED in the full registration fee.)*

**Register [HERE](https://www.mtnz.co.nz/conference): Payment by credit card or invoice; or at [www.mtnz.co.nz/conference](https://www.mtnz.co.nz/conference).**

**Please note cancellation policy below.**

*Following registration you will be sent a follow up form requesting your workshop selections along with a few other additional required details around food preference, accessibility etc..*

**Installment Service** - your full conference registration can be sectioned into three payments, with final payment required 1 March 2023. It qualifies for the early bird fee, plus a \$20 admin charge. This option cannot be used after 20 December 2022. Please be aware of cancellation and non-completion clauses below.

**Transport** - you are responsible for your own transport, plus cost, to/from the airport.

### **PLEASE NOTE THE FOLLOWING:**

■ Receipts will only be sent if requested. Due to the high volume of planning and organising, if you have not completed payment prior to conference your registration will be considered incomplete, you will be unable to attend conference and the following terms and conditions will apply.

#### **■ If you wish to cancel:**

Up to 6 weeks out from the conference: Full refund less \$50 (+ GST) administration fee.

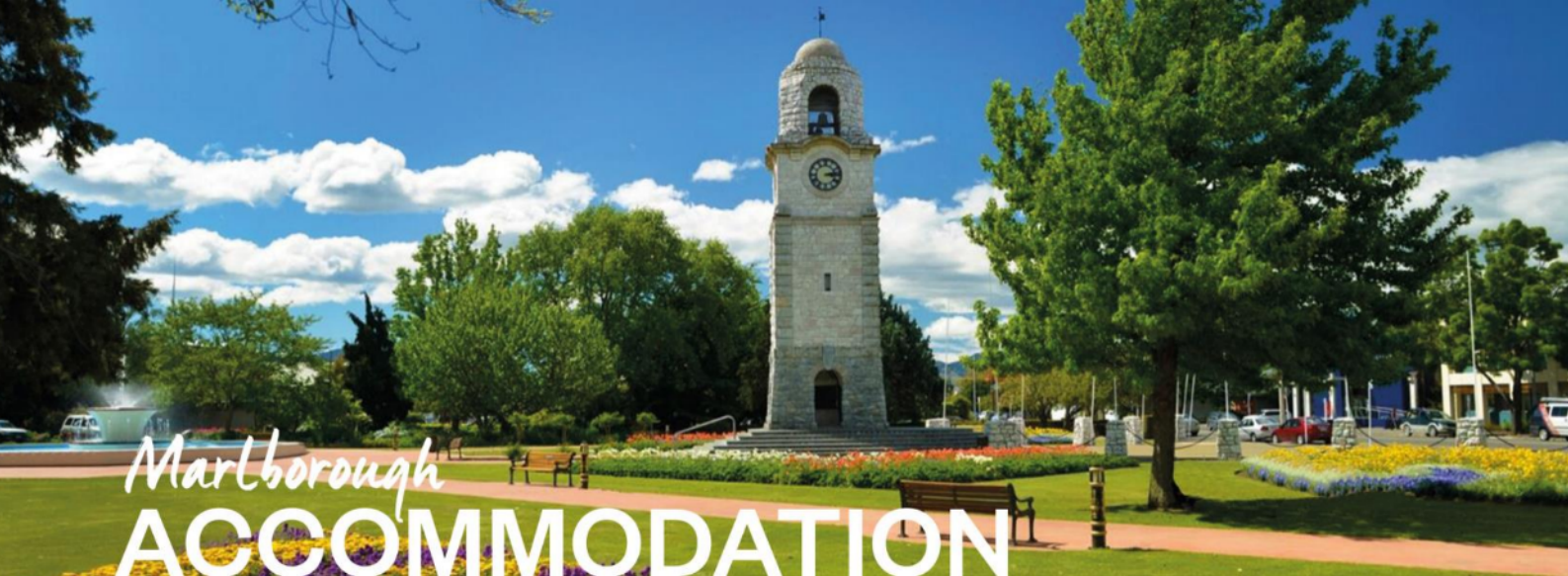
Between 6 weeks and 21 days out from the conference: 50% refund of total paid.

Less than 21 days out from the Conference: No refund.

*You are welcome to transfer your conference registration to someone at any stage if you are unable to attend at short notice.*

■ All conference information will be made available online and you will be updated regularly with email. If you have any questions about the registration form, please contact: Kirsty Skomski, Conference Coordinator. Email: [office@mtnz.co.nz](mailto:office@mtnz.co.nz); cell: 02102797798





On behalf of Business Events Marlborough, we have secured accommodation for the Musical Theatre New Zealand Conference at Marlborough's leading accommodation providers within walking distance of the Marlborough Events Centre. To book your accommodation please contact the property directly and mention you are a delegate of the MTNZ Conference.

All room rates are on a per room per night basis unless otherwise stated. Rates are in New Zealand dollars and are inclusive of GST (15%)



## **Chateau Marlborough**

**Distance from Events Centre 400m • Qualmark Five Star**

### **Room Types & Rates**

- 2 x Superior Studios \$225



## **The Marlborough Riverside Hotel**

**Distance from Events Centre 500m**

### **Room Types & Rates from \$185 to \$215**

- 3 x Standard King \$185
- 1 x Superior King \$195
- 14 x Executive Queen \$215

The Marlborough Riverside Hotel is just a stone's throw from the Taylor River and a few minutes' walk to Blenheim's CBD. This 4-star boutique hotel offers guests a choice of spacious well-appointed accommodation, restaurant, bar, swimming pool, and conference facilities. Native gardens surround the property, and the modern hotel provides a relaxing and peaceful environment during your stay.

Book via Phone (+64 3 577 7333) or Email [info@marlboroughhotel.co.nz](mailto:info@marlboroughhotel.co.nz)

**MTNZ wish to advise conference attendees that March is peak season for Marlborough accommodation - please do not delay reserving your accommodation for conference.**



## Lugano Motor Lodge

Distance from Events Centre 400m

### Room Types & Rates

- 3x Executive Studios \$195

The Lugano Motor Lodge is a modern 15-unit motel situated 250m from Blenheim's town centre and located directly opposite the beautiful Seymour Square. An easy five-minute walk to the Marlborough Events Centre, the Lugano affords conference attendees spacious, well-appointed, quiet units complemented with double glazing.

Book via Phone (+64 3 577 8808) or Email [stay@lugano.co.nz](mailto:stay@lugano.co.nz)

---



## Blenheim Palms Motel

Distance from Events Centre 550m

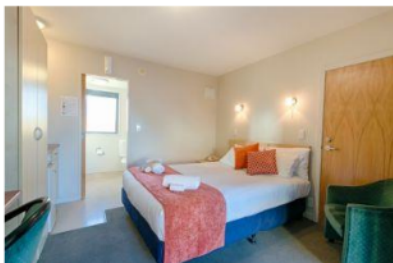
### Room Types & Rates from \$150 to \$220

- 6 x Studio (up to 2 people) \$150
- 5 x One Bedroom (up to 2 people) \$190
- 1 x Private Spa Pool Suite (up to 2 people) \$200
- 1 x Two Bedroom Family Suite (up to 2 people) \$220

Centrally located, Blenheim Palms Motel is only a five-minute walk away from the Marlborough Events Centre and conference facility. The motel offers unlimited high-speed Wi-Fi, a hot tub in the private courtyard and in-room entertainment with 50+ sky channels. Comfortable suites include a relaxing working space with desk and chair.

Book via Phone (+64 3 577 8845) or Email [info@blenheimpalmsmotel.com](mailto:info@blenheimpalmsmotel.com)

---



## Bella Vista Motel

Distance from Events Centre 500m • Qualmark Four Star

### Room Types & Rates from \$150 to \$230

- 17 x Range of Rooms available

Our superior smoke free Blenheim motel accommodation include a variety of studios and one-bedroom units and is within easy walking distance to the town centre. The purpose-built access units have been designed with parking at the door for your convenience. You have a choice of king, queen or single beds with electric blankets for those cooler nights.

Book via Phone (+64 3 579 3117) or Email [blenheim@bellavista.co.nz](mailto:blenheim@bellavista.co.nz)

---



## Centre Court Motel

Distance from Events Centre 900m

### Room Types & Rates

- 6 x Rooms including Twin Share & 2 Bedroom Apartments

Centre Court Motel is a modern motel and is situated in a quiet central location. It has 12 spacious ground floor units, and the room options are 6 studios, 4 one bedroom and 2 two-bedroom units. We are in a premium location for the corporate traveller, situated 200m to town and restaurants and a 10-minute walk to the conference centre.

Book via Phone (+64 3 577 7203) or Email [stay@centrecourtmetel.co.nz](mailto:stay@centrecourtmetel.co.nz)

